



MONTHLY MEMBERSHIP PROGRESS REPORT

District 325B1

Results as of: 05/31/2018

GMT: KHAGENDRA SITAULA

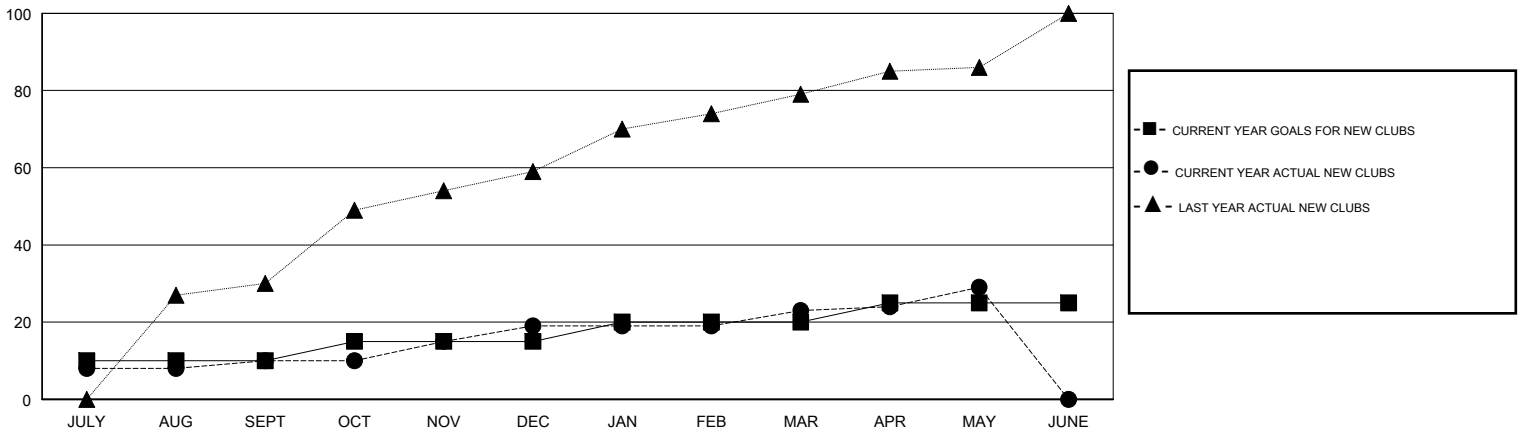
LOCATION NEPAL

GMT CA

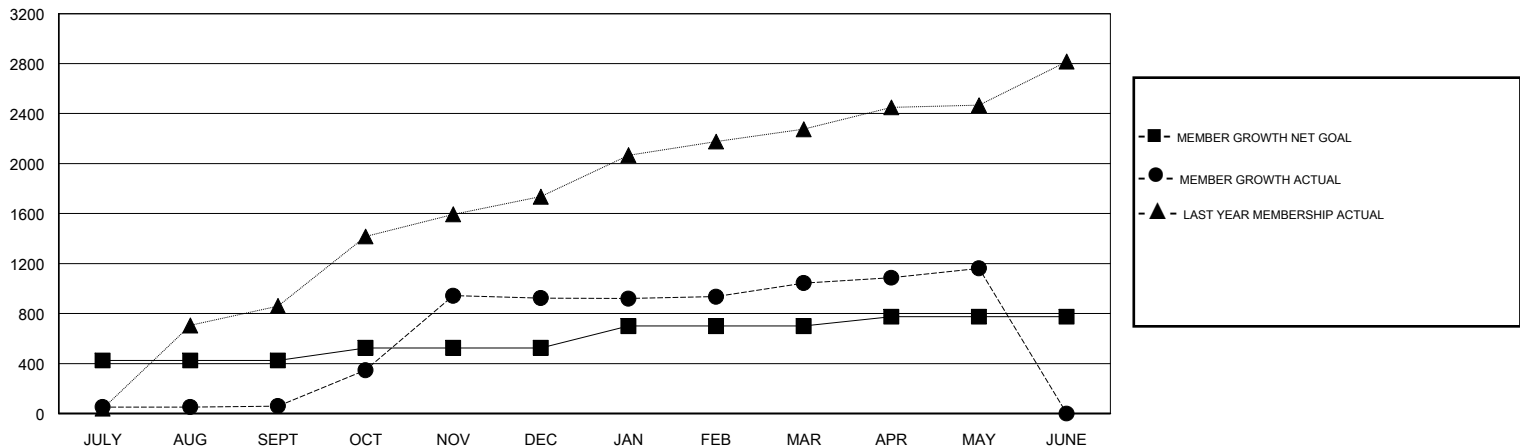
Clubs			
RESULTS FOR 2017-2018			
QUARTER	NEW CLUB GOAL	NEW CLUBS	DROPPED CLUBS
JULY/AUG/SEPT	10	10	0
OCT/NOV/DEC	5	9	0
JAN/FEB/MAR	5	4	1
APR/MAY/JUNE	5	6	1

Members			
RESULTS FOR 2017-2018			
QUARTER	MEMBER GROWTH NET GOAL	MEMBER GROWTH ACTUAL	DROPPED MEMBERS ACTUAL (including transfers)
JULY/AUG/SEPT	425	492	413
OCT/NOV/DEC	100	1,293	348
JAN/FEB/MAR	175	322	196
APR/MAY/JUNE	75	354	226

GOALS AND ACTUAL NEW CLUBS CUMULATIVE



GOALS AND ACTUAL MEMBERS CUMULATIVE



DROPPED CLUBS: 2	234 CLUBS OF 339 ADDED 1 OR MORE NEW MEMBERS	<u>GENDER DISTRIBUTION</u>	
DROPPED MEMBERS		MALE	8,092 (76.02%)
DECEASED	7	FEMALE	2,552 (23.98%)
CLUB CANCELLED	51	Women Percentage Fiscal Year Goal: 22%	
OTHER	1,125	TOTAL FAMILY UNIT MEMBERS	5,360
TOTAL	1,183	FAMILY MEMBERS PAYING HALF DUES	3,294

[CLICK HERE FOR CUMULATIVE MEMBERSHIP DATA](#)